



# **WORLDWIDE PROJECT HIGHLIGHT**

**THE DESIGN THE QUALITY THE RANGE**



## MUMBAI JIO WORLD CENTRE - INDIA

### Commercial Square Fountain Area

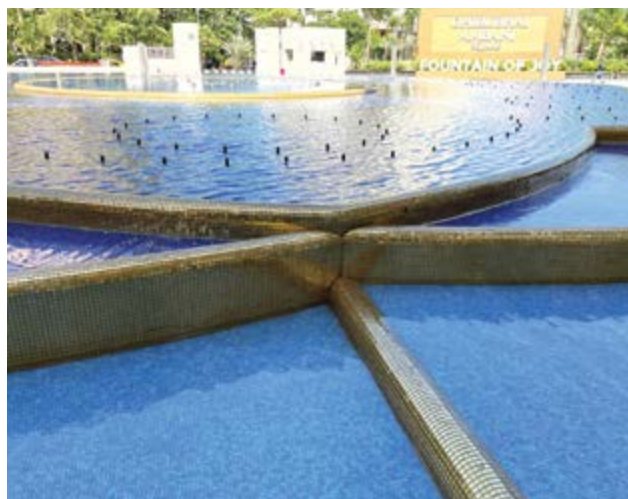
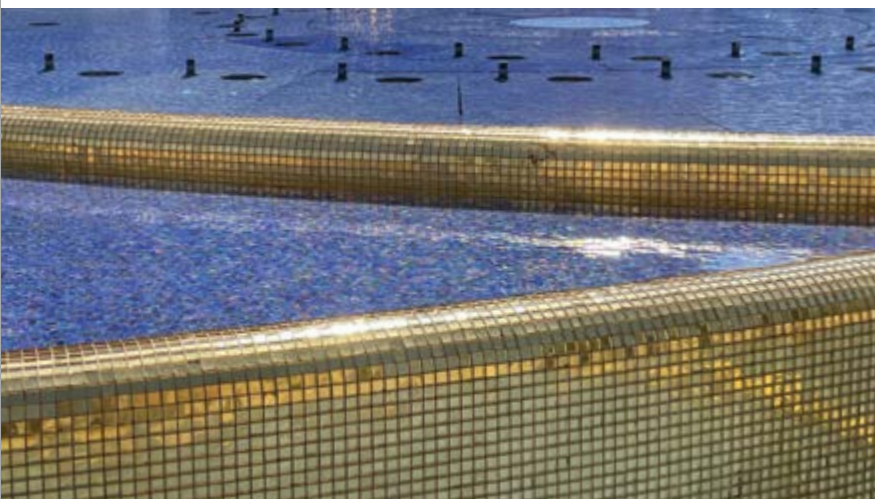
Location: Mumbai, India  
Year Of Supply: 2021  
Material & Quantity: 1,300m<sup>2</sup> 24K Gold Glass Mosaic



24K Gold Glass Mosaic 25x25mm

### Project Overview:

The Jio World Centre boasts the Lotus-Inspired Fountain, a captivating spectacle that presents meticulously choreographed displays featuring water, light, music, and fire. Situated within the prestigious Dhirubhai Ambani Square, an integral component of the Jio World Centre, this iconic landmark resides within the bustling heart of the Bandra Kurla Complex, Mumbai.

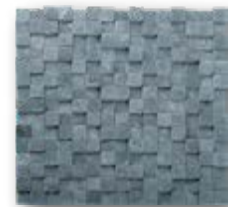




## ARIA RESORT AND CASINO - USA

### Water Feature Wall At The Hotel Entrance

Location: Las Vegas, USA  
Year Of Supply: 2009  
Material & Quantity: 1,000m<sup>2</sup> Marble Mosaic 20x20mm Breakfront



Bluestone Mosaic 20x20mm Breakfront

### Project Overview:

Aria Resort and Casino is an integral component of the prominent CityCenter Complex, strategically positioned on the Las Vegas Strip. Notably, it stands as the largest edifice within this prestigious complex. Our Bluestone Mosaic plays a crucial role in exposing the hotel grandeur entrance, adding to the property luxurious setting.





# THE POST OAK HOTEL HOUSTON - USA

## Tiles and Mosaics for The Lobby Area

Location: Houston, USA  
Year Of Supply: 2020  
Material & Quantity: 1000m<sup>2</sup> Marble/Glass



Calacatta Marble



Glass Mosaic Passion

### Project Overview:

The Post Oak Hotel stands as Texas's sole Forbes Five-Star Hotel and Spa and holds the distinction of being Houston's exclusive AAA Five-Diamond destination. The Hotel smoothly combines refined accommodations with ample conference facilities, premium office space, designer fashion, signature dining options, and a range of sophisticated amenities all under one roof.

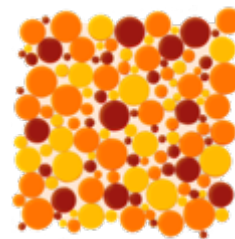




## DUBAI EXPO 2020 - EMIRATE OF DUBAI

### Fire Spire Feature for 2020 Dubai Expo

Location: Dubai , Emirate of Dubai  
Year Of Supply: 2020  
Material & Quantity: Customized Colours Bubble Mosaic 500m<sup>2</sup>



Customize Colours Bubble Mosaic

### Project Overview:

Originally scheduled for October 20, 2020, to April 10, 2021, the Expo's opening was postponed to October 2021 due to the Covid-19 pandemic. Spanning 438 hectares (1,083 acres) between Dubai and Abu Dhabi, its design concept embodies the theme of 'Connect Minds, Creating the Future.' Remarkably, the event drew over 24 million visitors during its run.



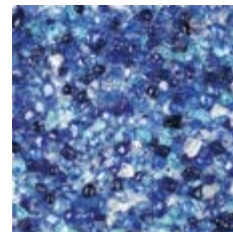




## THE BAHA MAR CASINO HOTEL - BAHAMAS

### Water Feature for The Grand Hotel Entrance

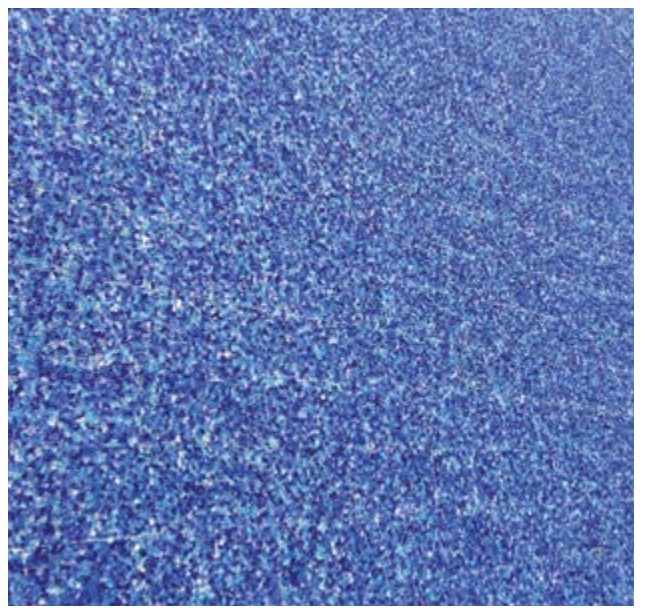
Location: Nassau, Bahamas  
Year Of Supply: 2014 to 2015  
Material & Quantity: Everstone Galaxy Glass Tile, 4,840m<sup>2</sup>.



Everstone Galaxy Glass Tile

### Project Overview:

Baha Mar, a prestigious \$3.5 billion casino resort on the pristine north shore of Nassau in the Bahamas, seamlessly integrates four distinguished hotel brands within a unified campus offering gaming, retail, dining, convention facilities, spa services, pools, and scenic canals, all set against a breathtaking natural backdrop. Since its inauguration in November 2015, Baha Mar has swiftly emerged as a coveted Caribbean vacation destination.

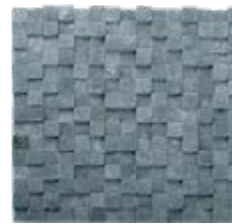




# THE ROYAL ATLANTIS RESORT & RESIDENCES

## Horizon Waterfall for The Grand Entrance

Location: Dubai, Emirate of Dubai  
Year Of Supply: 2020  
Material & Quantity: Black Basalt 20x20mm Breakfront , 480m<sup>2</sup>.



Black Basalt 20x20mm Breakfront

### Project Overview:

The Royal Atlantis Resort and Residences is a colossal development, encompassing both a luxurious hotel and residential units. The main tower soars to 185 meters above sea level across 43 stories, while the residential tower reaches a height of 165 meters above sea level spanning 37 stories.





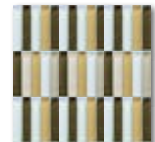
## DISNEYLAND PARK - SHANGHAI, CHINA

### Mosaics & Tiles in Public Areas

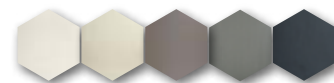
Location: Shanghai, China  
Year Of Supply: 2016  
Material & Quantity: 5,000m<sup>2</sup> of Glass and Porcelain Mosaics



3D Glass Watercube



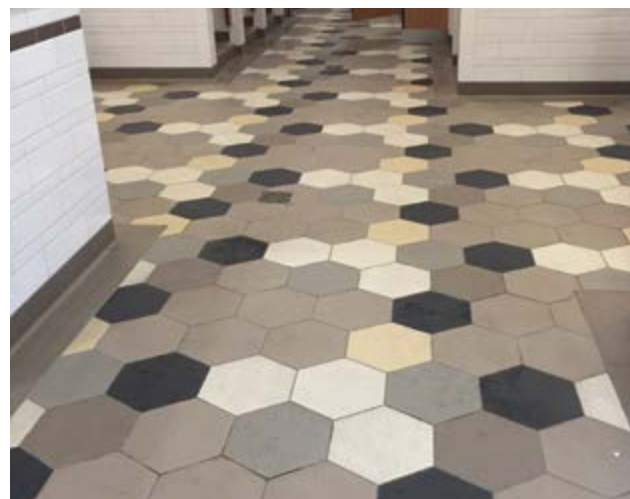
Glass Mosaic M18



Durastone Hexagon

### Project Overview:

Disneyland Park, situated in Shanghai, China and inaugurated in June 2016, benefits from the timeless elegance of our Everstone product range. This collection has successfully delivered a blend of classic and contemporary solutions to enhance the park's overall aesthetic.

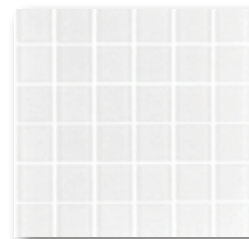




## UNIVERSITY OF DÜSSELDORF - MEDICAL LIBRARY

### Glass Mosaics for Building Façade

Location: Düsseldorf, Germany  
Year Of Supply: 2010 to 2011  
Material & Quantity: 3,000m<sup>2</sup> Super White Glass Mosaic 50x50mm

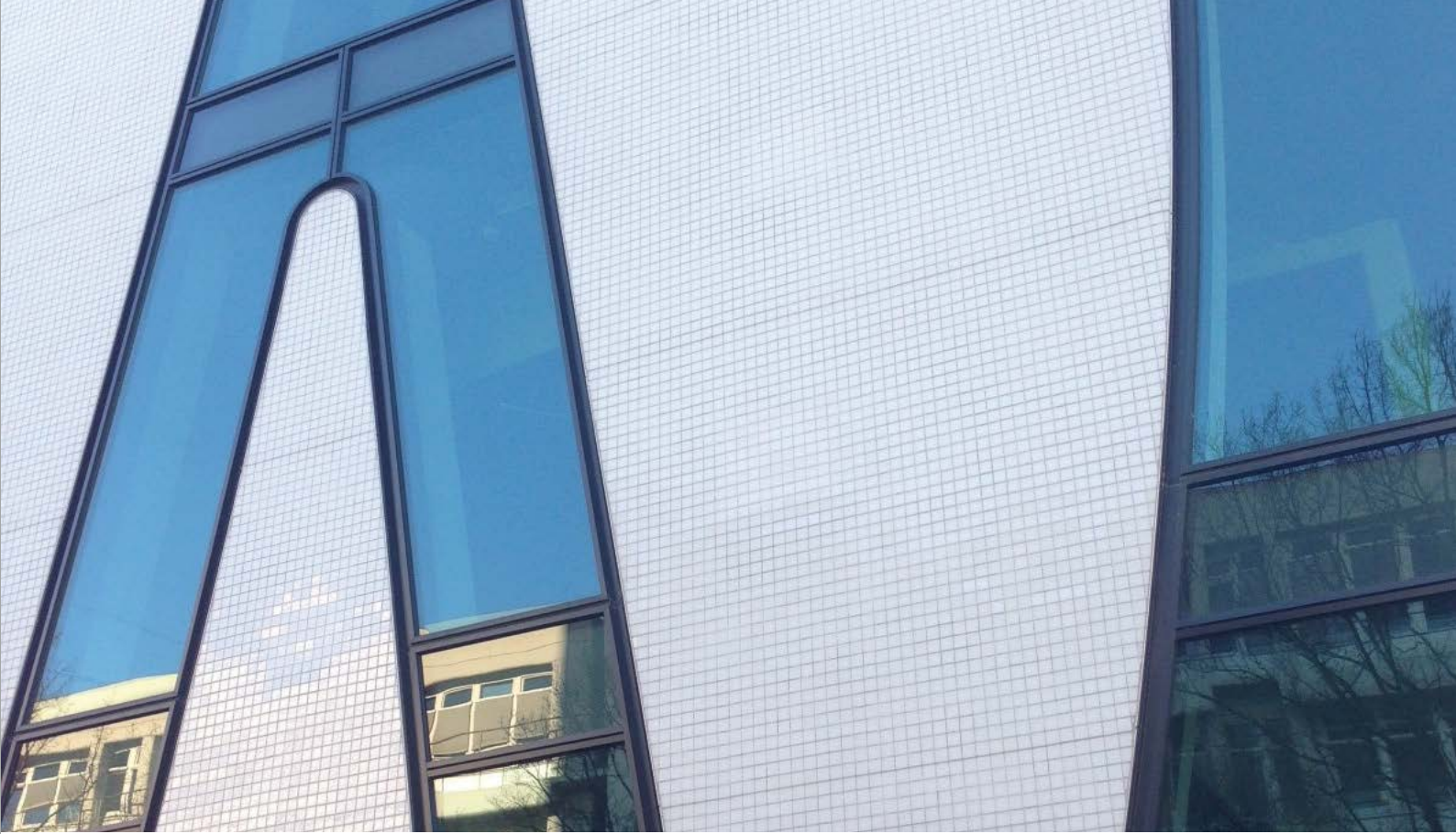


Glass Mosaic 50x50mm ES58

### Project Overview:

The Dusseldorf Univeristy Building Study and Learning Centre, houses the library of the University Medical Literarure. It features an elegant façade in Everstone Glass Mosaics, in a smooth and bright white appearances. It proudly received the 2014 Good Building Award from the BDA Dusserdof Group for its mark in exeptional design and functionality.



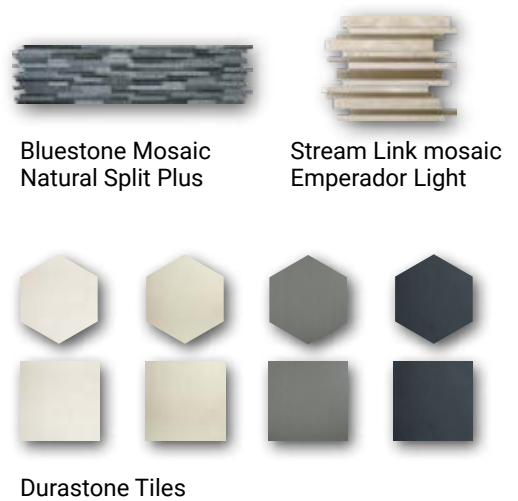




## TIAN AN CLOUD PARK - CHINA

### Porcelain Tiles, Marble Mosaics, Porcelain Mosaics

Location: Shenzhen, China  
 Year Of Supply: 2015 - 2016  
 Material & Quantity: 36,000m<sup>2</sup> of Porcelain Tiles , Marble Mosaics.



### Project Overview:

Located in the vibrant center of Shenzhen city, Tian An Cloud Park offers a cleverly designed community centre, catering for residential, commercial, and high-technology business needs.

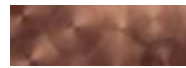




## SALT LAKE CITY AIRPORT - USA

### Mosaics for Commercial Area Wall

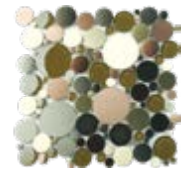
Location: Salt Lake City, USA  
 Year Of Supply: 2020  
 Material & Quantity: 1,000m<sup>2</sup> Metal Tiles and Mosaics



Metaluxe Tile



Metallic Tile



Metalplus Mosaics  
 Bubbles Mixed colour

### Project Overview:

Salt Lake City International Airport (SLC) ranks as the 21st busiest airport in the United States and the 47th in the world. With over 300 daily departures to 90 nonstop destinations, SLC is a key transportation hub. With a substantial U\$4.1 billion redevelopment initiative in the way, will make this airport one of the most cost-efficient airport in the country.

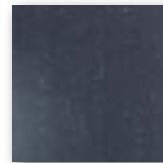




# DARWIN INTERNATIONAL AIRPORT - AUSTRALIA

## Mosaics for Commercial Area Wall

Location: Darwin, Australia  
Year Of Supply: 2019  
Material & Quantity: Durastone Charcoal 600x600 Matt, 4,000m<sup>2</sup>



Durastone Charcoal  
600x600mm Matt

### Project Overview:

Darwin International Airport stands as the primary gateway to the Northern Territory and ranks as the tenth busiest airport in Australia. Comprising an international terminal, a domestic terminal, and a dedicated cargo terminal, it plays a pivotal role in regional connectivity.

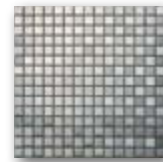




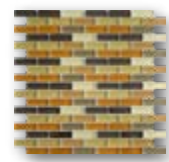
# NEW DOHA (HAMAD) INTERNATIONAL AIRPORT

## Mosaics for Commercial Area Wall

Location: Doha, Qatar  
Year Of Supply: 2009 to 2012  
Material & Quantity: 14,000m<sup>2</sup> of Glass and Metal Mosaics



Metal Mosaic  
20x20mm Silver



Glass Mosaic  
WT2 Brick Pattern

### Project Overview:

Formerly known as New Doha International Airport (NDIA), Hamad International Airport serves as Doha's premier international gateway in Qatar. Our Everstone stainless steel and glass mosaics adorn the walls of elevators and restrooms throughout the airport, enhancing its aesthetic appeal.





# SINGAPORE CHANGI AIRPORT

## Blossom – Sats & Plaza Premium Lounge

Location: Terminal 4, Singapore Changi Airport  
Year Of Supply: 2018  
Material & Quantity: 1,200m<sup>2</sup> of Durastone Hexagone Tiles



Durastone Hexagone Tiles

### Project Overview:

Blossom - SATS & Plaza Premium Lounge at Terminal 4, Singapore Changi Airport, a partnership between SATS and Plaza Premium Lounge, provides travelers with modern amenities, including showers, expert massages, and delectable cuisine.





## INTERIO BUILDING, INNSBRUCK - AUSTRIA

### Glass Mosaic for external Walls

Location: Innsbruck, Austria  
Year Of Supply: 2012  
Material & Quantity: 1,200m<sup>2</sup> of Glass in custom-made design



Glass Mosaic

### Project Overview:

The Interio Building, located in Innsbruck, Austria, is a globally recognized hub for winter sports and holidays at the base of the Alps, it was meticulously designed to convey a captivating white winter floral motif to its facade.







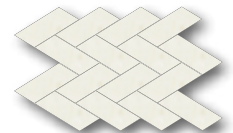
# 1 Blich Street - SYDNEY, AUSTRALIA

## Porcelain & Metal Mosaics for Office Floor

Location: Sydney, Australia  
 Year Of Supply: 2014  
 Material & Quantity: 1,200m<sup>2</sup> Durastone Shape Tile - Chevron & Mosaic  
 Blends of Durastone and Metal - Airstrip



Durastone and Metal Airstrip Mosaic



Durastone Tile Chevron

### Project Overview:

1 Bligh Street, a contemporary office tower in Sydney’s CBD with stunning Sydney Harbour views, received the “Best Green Building in Asia & Australasia” award in 2012. Our Durastone Airstrip Mosaics and Chevron tiles were selected to enhance the high-profile, premium office spaces within the building.





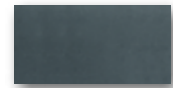
## TESCO LIFESPACE SHOPPING MALL - CHINA

### Floor and Wall Tiles for Commercial Area

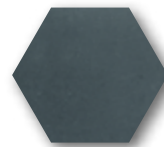
Location: Xiamen, China  
 Year Of Supply: 2012  
 Material & Quantity: 10,800m<sup>2</sup> Porcelain Tiles



Lavacode Porcelain Tile  
Hexagon Shape



Durastone Ash Grey  
300x600mm Matt



Lavacode Porcelain Tile Hexagon Shape

### Project Overview:

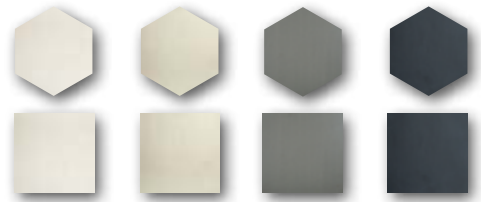
Tesco Lifespace Shopping Mall, a project initiated by Britain's foremost retailer and the largest supermarket chain, Tesco PLC, Spans on 75,000 square meters floor space. This meticulously designed mall caters to the discerning residents of this vibrant southeastern Chinese city, offering a distinctive and unparalleled shopping experience.



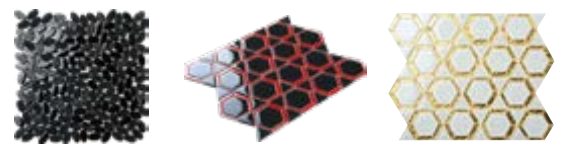
# MICROSOFT SHANGHAI OFFICE - CHINA

## Floor and Wall Tiles for Public Area

Location: Shanghai, China  
 Year Of Supply: 2021  
 Material & Quantity: 2,500m<sup>2</sup> Porcelain Tiles & Mosaics



Durastone Tiles



Crystal Mosaics

### Project Overview:

Microsoft Shanghai New Building B07, within Shanghai's Ziye Square, offers excellent accessibility and comprehensive business amenities. This modern office is purposefully designed to provide Microsoft employees with an open, contemporary, and comfortable workspace.





## SHISEIDO GLOBAL FLAGSHIP STORE - TOKYO, JAPAN

### Marble Mosaics & Porcelain Mosaics Wall

Location: Ginza, Tokyo, Japan  
Year Of Supply: 2020  
Material & Quantity: 300<sup>2</sup> 3D Marble Mosaics



3D Marble Mosaic - Downtown

### Project Overview:

The store is located in the company's birthplace of Ginza, which is a symbolic area for Shiseido and for Japanese culture. The store aims to provide a "unique beauty experience that combines human touch and technology" and to showcase the brand's "heritage, science, art, and innovation".

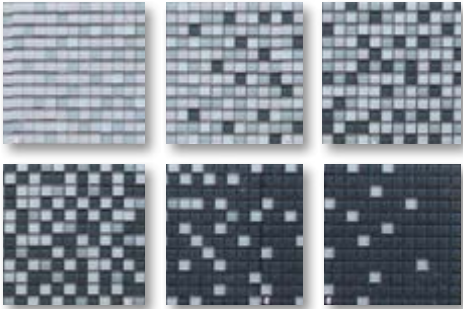




# CROWN TOWERS SYDNEY - SYDNEY, AUSTRALIA

## Custom Glass Mosaic

Location: Barangaroo Sydney, Australia  
Year Of Supply: 2020  
Material & Quantity: 800m<sup>2</sup> of Bespoke Gradient 25x25x8mm Glass Mosaic



Customize Glass Mosaic 25x25mm

### Project Overview:

Launched in December 2020, Crown Towers represents a pinnacle of opulence in Sydney’s hospitality landscape. This exceptional hotel boasts a host of world-class amenities, including the luxurious Vitality Spa 1 and 2, along with a meticulously crafted Steam Room enveloped in custom gradient glass mosaic.





## FINCH WEST STATION - TORONTO

### Glass Tile For Concourse level

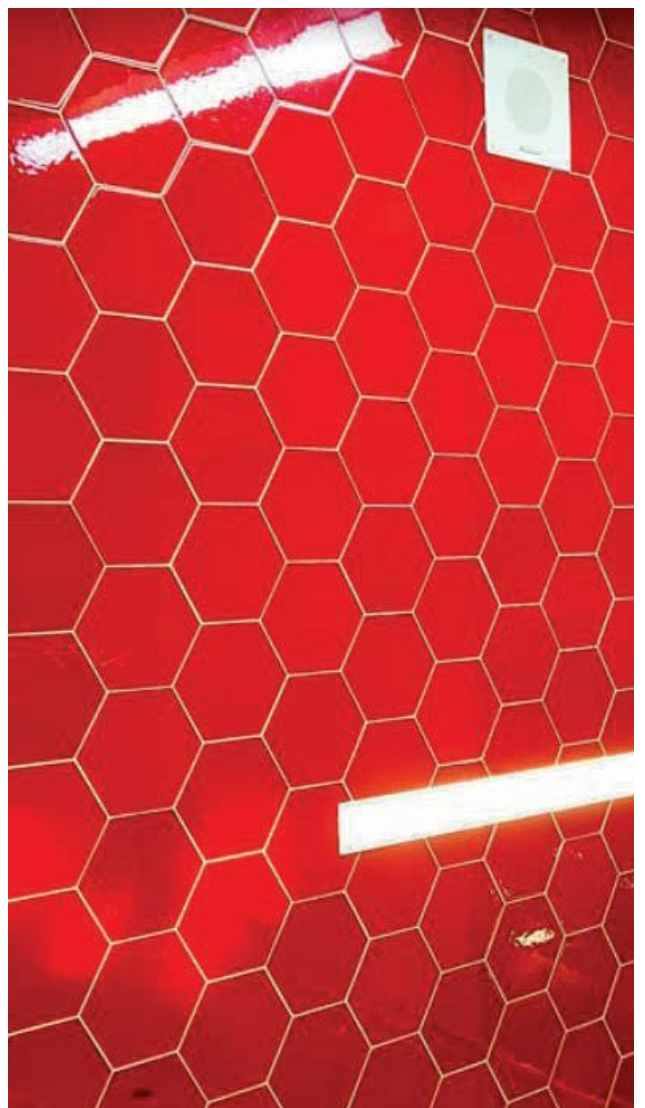
Location: Toronto, Canada  
Year Of Supply: 2017  
Material & Quantity: 1,630m<sup>2</sup> Customized Glass Tile



Customized  
Crystal Glass Tile

### Project Overview:

Finch West Station is strategically located in the northwestern region of Toronto, at the intersection of Keele Street and Finch Avenue West. This transit hub serves the adjacent communities, offering convenient access to a range of essential amenities and facilities. Notably, the station's interior features is an elegant Everstone Hexagonal Crystal Glass tile, adds a distinctive unique design to the surroundings.





## HAFENCITY UNIVERSITÄT METRO STATION - GERMANY

### Glass Tile

Location: Hamburg, Germany  
Year Of Supply: 2011  
Material & Quantity: All shades of Blue color Glass tile with total quantity 3,000m<sup>2</sup>.



Glass Tile

### Project Overview:

The Hafencity Universität Metro Station stands as a key component of Hamburg's U-Bahn network, serving the vibrant Hafencity district in central Hamburg, Germany. Its design is a tribute to the dynamic color palette of Hafencity, skillfully realised using different shade combination of Everstone's Glass Tiles.







## LOTTE SHOPPING MART GIMPO AIRPORT - KOREA

### Floor and Wall Tiles for Commercial Area

Location: Seoul, Korea  
 Year Of Supply: 2011  
 Material & Quantity: 12,000m<sup>2</sup> Porcelain Tiles & Mosaics



Durastone Tile  
 Crema Luna 600x600mm

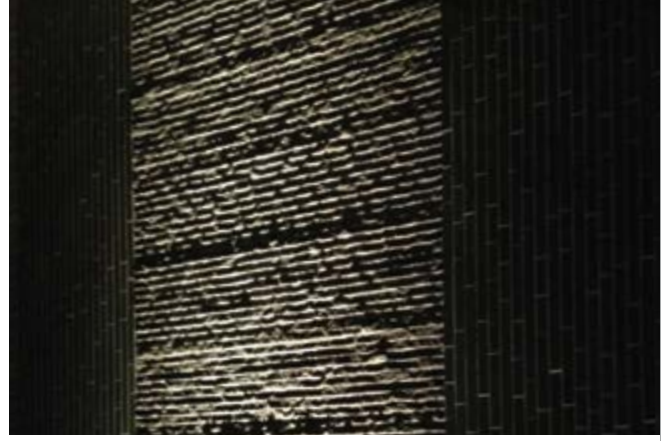


Durastone Mosaic  
 Cultural Brick

### Project Overview:

Lotte Mall Gimpo Airport, South Korea's leading lifestyle shopping complex, now features our Durastone series porcelain tiles and mosaics in the department store area, taking into account both aesthetics and practicality.

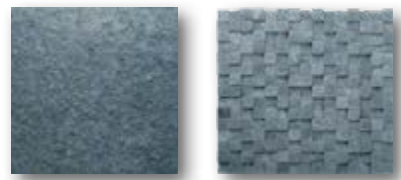




## MUSE BAR - SHANGHAI, CHINA

### Marble Mosaics & Tiles

Location: Shanghai, China  
Year Of Supply: 2012  
Material & Quantity: Natural Blue Stone Grooved and Chiselled tiles and Great-Wall mosaic.



Blue Stone Tile & Mosaic





## ALBERTINA PASSAGE DINNERCLUB - AUSTRIA

### 3D Glass Mosaics

Location: Vienna, Austria  
Year Of Supply: 2013  
Material & Quantity: Watercube in ES32 and ES58



3D Glass Watercube

### Project Overview:

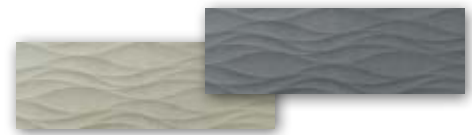
Transformed from an underpass passage, this nightclub boasts a contemporary ambiance. The Everstone 3D Glass tiles lend a fresh and stylish appearance to the bar area.



## WESTIN HOTEL - QINGDAO, CHINA

### Durastone 3D Tiles for Lobby Area

Location: Qingdao, China  
Year Of Supply: 2018  
Material & Quantity: 2,500m<sup>2</sup> Durastone 3D Tile



Durastone 3D Tiles

### Project Overview:

Located in one of the city's tallest skyscrapers at the heart of the central business district, the Westin Qingdao offers stunning panoramic city views. It's ideally situated near major tourist attractions, the municipal government center, and the city's Line 3 subway station. This high-rise gem is part of a stylish complex, featuring upscale shopping and luxury apartments.

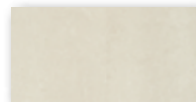




## NATIONAL UNIVERSITY HOSPITAL MEDICAL CENTRE

### Porcelain Tile for Floor & Wall

Location: Singapore  
Year Of Supply: 2012  
Material & Quantity: 18,000m<sup>2</sup> Durastone Porcelain Tiles in Matt and Brushed finishes



Botticino Matt



Olive Brushed



Ash Grey Matt

### Project Overview:

The 19-story National University Hospital (NUH) Medical Centre is serving as a state-of-the-art outpatient facility and as a vital clinical training and research hub for the National University of Singapore's medical and dental faculties, initiated patient services in July 2013.



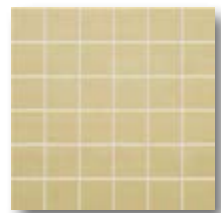
## ALDARA HOSPITAL AND MEDICAL CENTRE

### Porcelain Tile & Mosaic for Floor & Wall

Location: Riyadh, Saudi Arabia  
 Year Of Supply: 2016  
 Material & Quantity: 6,000m<sup>2</sup> Durastone Porcelain Tiles & Mosaics



Botticino Matt



Sand Beige Matt

### Project Overview:

Aldara Hospital and Medical Centre is Riyadh's premier and most advanced outpatient facility, commenced operations in 2016, providing cutting-edge healthcare services while delivering an unparalleled standard of patient care.



## SENG KANG HOSPITAL

### Porcelain Tile for Floor & Wall

Location: Singapore  
Year Of Supply: 2016 - 2017  
Material & Quantity: 52,000m<sup>2</sup> Durastone Porcelain Tiles in Polished, Matt and Brushed finishes



Coco Brushed



Crema Luna Polished

### Project Overview:

Sengkang Hospital in Singapore was completed in 2018 and is one of the largest hospitals in the country. The hospital is a crucial component of Singapore's overall plan to provide high-quality and convenient healthcare services to its citizens.



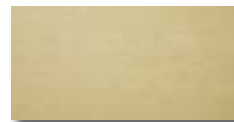




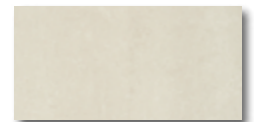
## MARY FREE BED REHABILITATION HOSPITAL

### Porcelain Tile for Floor

Location: Michigan, USA  
Year Of Supply: 2014  
Material & Quantity: 5,000m<sup>2</sup> Durastone Porcelain Tiles in Matt finish



Sand Beige



Botticino

### Project Overview:

Mary Free Bed Rehabilitation Hospital is a 167-bed acute care inpatient rehabilitation hospital for children and adults who have experienced injury or illness requiring physical rehabilitation.





## HYATT REGENCY QINGDAO

### Glass Mosaics, Porcelain Mosaics

Location: Qingdao, China  
 Year Of Supply: 2012  
 Material & Quantity: 4,600m<sup>2</sup> of Glass Mosaics, Porcelain Mosaics



Glass Mosaic  
Bullets ESM30



Glass Mosaic  
Ovaland ESM32

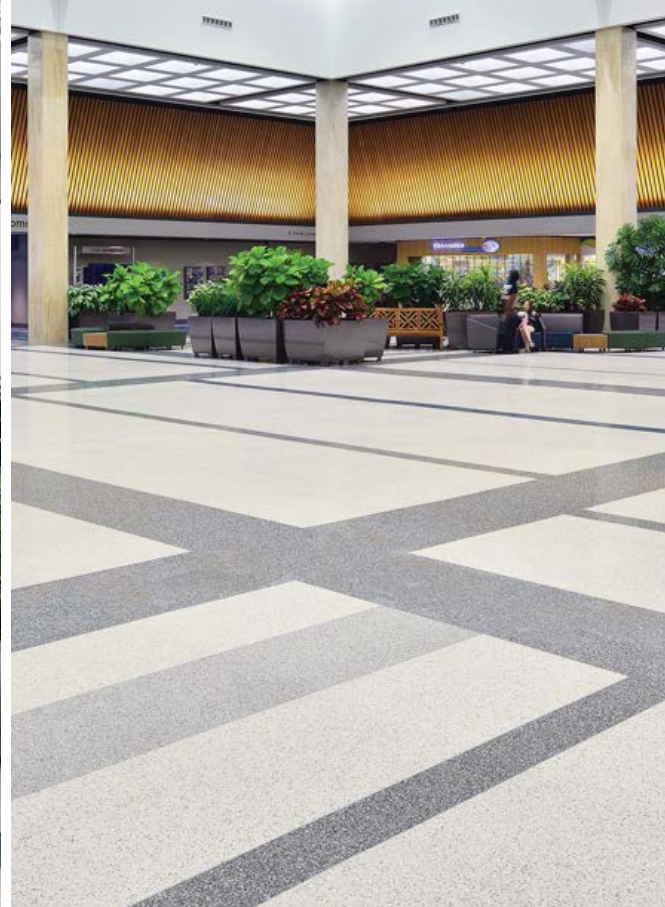


Stream Link Mosaic  
Emperor Light

### Project Overview:

Hyatt Regency Qingdao stands as a distinguished and contemporary luxury establishment with a modern and traditional Chinese décor, strategically positioned in the heart of Qingdao city. targeting business, convention and group travel.





## NORFOLK INTERNATIONAL AIRPORT

### Everquartz Porcelain Tile

Location: Norfolk, USA  
Year Of Supply: 2015  
Material & Quantity: 4,500m<sup>2</sup> of Everquartz Porcelain Tiles



Everquartz Tile

### Project Overview:

Norfolk International Airport stands as a key international aviation hub situated in Norfolk, Virginia. In the year 2015, Everstone's prestigious Everquartz porcelain tiles were specifically selected for their surface characteristics and appearance as the flooring solution for the airport's extensive renovation project.



## ONE RINCON HILL APARTMENTS

### Durastone Tile and Mosaic for Bathroom Wall & Floor

Location: San Francisco, USA  
Year Of Supply: 2015  
Material & Quantity: 3,900m<sup>2</sup> Durastone Olive Chevron Tile  
490m<sup>2</sup> Durastone Olive Hexagon Mosaics



Durastone Tile  
Olive Chevron



Durastone Mosaic  
Olive Hexagon

### Project Overview:

One Rincon Hill represents an exclusive residential development situated at the pinnacle of Rincon Hill in San Francisco, California, in the United States.





## PORSCHE TOWER, MIAMI

### Durastone porcelain Mosaics

Location: Miami, USA  
Year Of Supply: 2015  
Material & Quantity: 1700m<sup>2</sup> Durastone Charcoal Airstrip Mosaics



Durastone Mosaic Charcoal Airstrip

### Project Overview:

The Porsche Tower is a high-end residential skyscraper located in Sunny Isles Beach, just north of Miami Beach. The tower was designed with luxury and comfort in mind, offering a range of high-end amenities such as a spa, oceanfront pool, lounge, and fitness center.

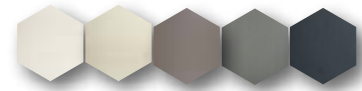




## WOLLONGONG SHOPPING CENTRE

### Everstone Hexagon Porcelain Tiles

Location: Wollongong, Australia  
Year Of Supply: 2015  
Material & Quantity: Everstone Durastone Hexagon tiles mixed color, quantity approx. 1,600m<sup>2</sup>



Durastone Hexagon

### Project Overview:

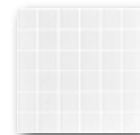
Wollongong Central, the foremost fashion and lifestyle hub in the Illawarra, underwent a high-end redevelopment in 2017. This iconic architectural space spans three buildings in the heart of Wollongong CBD, where Everstone Durastone Hexagon tiles have been selected in the Food Court for its distinguishing difference.



# MANDALAY BAY

## Everstone Glass Mosaics

Location: Las Vegas, USA  
Year Of Supply: 2003  
Material & Quantity: 1900m<sup>2</sup> Everstone Glass Mosaics 50x50mm



Glass Mosaic 50x50mm

### Project Overview:

Mandalay Bay stands as a distinguished luxury resort and casino nestled within the vibrant city of Las Vegas, Nevada. Within this lavish establishment, our exclusive Everstone Glass mosaics have been incorporated into the design, enhancing the SPA and shower walls appearance.







# LUXURY RESIDENTIAL PROJECT

# PRIVATE RESIDENTIAL I - GOLD COAST, AUSTRALIA





# PRIVATE RESIDENTIAL II - SYDNEY, AUSTRALIA

Lobby

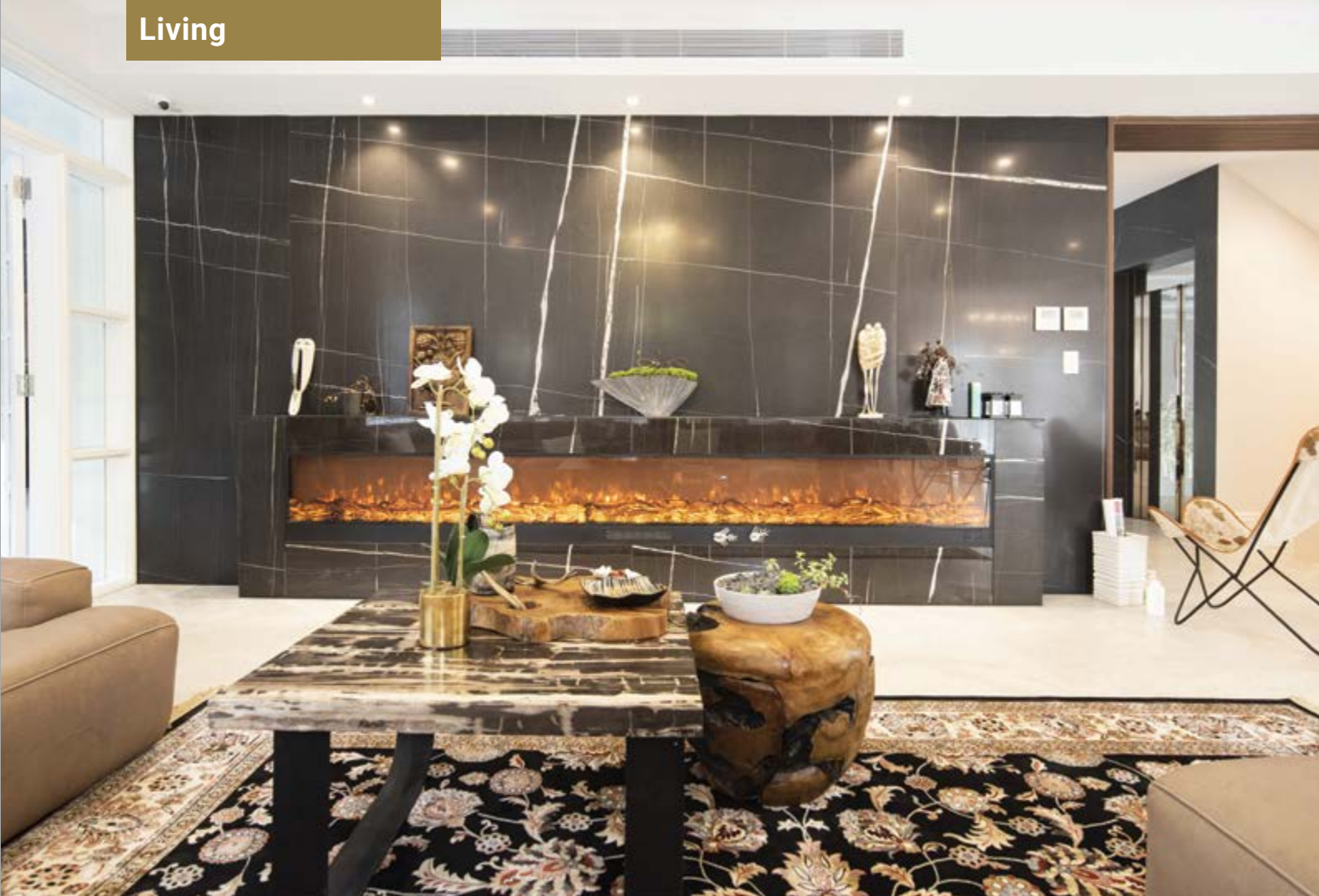


Kitchen



# PRIVATE RESIDENTIAL II - SYDNEY, AUSTRALIA

Living



Bathroom



# PRIVATE RESIDENTIAL III - SYDNEY, AUSTRALIA

Kitchen



Living



Backyard



# PRIVATE RESIDENTIAL IV - SYDNEY, AUSTRALIA

Lobby



Kitchen



Bathroom



# PRIVATE RESIDENTIAL V - SYDNEY, AUSTRALIA

Living



Living





# PRIVATE RESIDENTIAL V - SYDNEY, AUSTRALIA

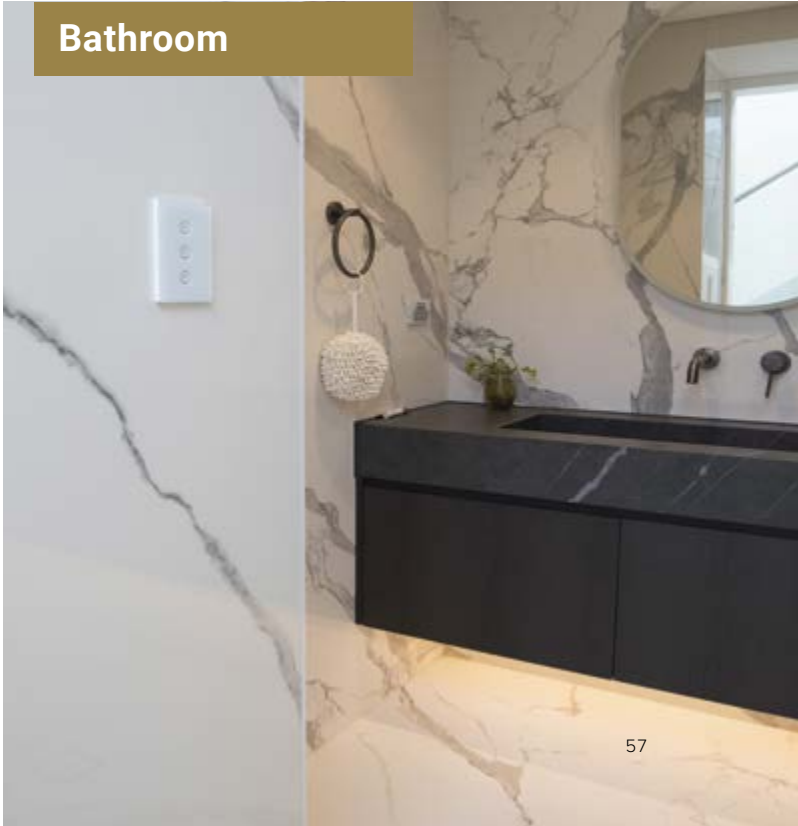
Kitchen



Living



Bathroom



# PRIVATE RESIDENTIAL VI - SYDNEY, AUSTRALIA

Lobby



# PRIVATE RESIDENTIAL VI - SYDNEY, AUSTRALIA

Dining Room



Bedroom



Bathroom



# PRIVATE RESIDENTIAL VII - SYDNEY, AUSTRALIA

Living



# PRIVATE RESIDENTIAL VII - SYDNEY, AUSTRALIA





**Call +61 2 9795 2000**

20 Princes Road East, Auburn NSW 2144, Australia

[info@everstone.com.au](mailto:info@everstone.com.au)

[www.everstone.com](http://www.everstone.com)